

TrueVIS SG series printer / cutter

THE FUTURE OF YOUR  
BUSINESS STARTS HERE



 Roland

# TrueVIS SG series printer / cutter

4 Colour : CMYK

Build an unbeatable business with the TrueVIS SG series integrated printer / cutters. The SG-540 and SG-300 deliver Roland DG's renowned quality, reliability and cutting-edge features, at an exceptional price.

Representing an exciting new era in outstanding colour vibrancy and advanced print and cut functionality, the TrueVIS SG series includes user-friendly new features to optimise your wide format print production.

Whether you're just starting out or wanting to expand production, the TrueVIS SG series can help you get where you want to be.



## QUALITY



### Wow your customers with stunning quality

Produce amazingly vibrant output, a high gloss finish and uniform solid colours at impressive production speeds, through the combination of the latest generation FlexFire printheads and TrueVIS Element Ink.

Available in CMYK, TrueVIS Element Ink provides excellent performance and consistency with the reassurance of a manufacturer owned product, all at an economical price-point.



## VERSATILITY



### Print and contour cut your way to more profit

Our most advanced integrated print and cut technology, including the new cut carriage and blade holder, means you can produce more applications on multiple medias for an almost infinite range of money-making opportunities. Enabling amazing decal and perf cut graphics for signs, banners, stickers, garment personalisation, window, wall and vehicle graphics and much more.



SG-540



SG-300

# TrueVIS SG series

Specifications		SG-540		SG-300	
Model		SG-540		SG-300	
Printing technology		Piezoelectric inkjet			
Media	Width	210 to 1,371 mm (8.3 to 54 in.)		182 to 762 mm (7.2 to 30 in.)	
	Thickness	Max. 1.0 mm (39 mil) with liner, for printing Max. 0.4 mm (16 mil) with liner and 0.22 mm (9 mil) without liner, for cutting			
	Roll outer diameter	Max. 210 mm (8.3 in.)			
	Roll weight	Max. 30 kg (66 lb.)		Max. 25 kg (55 lb.)	
	Core diameter*1	76.2 mm (3 in.) or 50.8 mm (2 in.)			
Printing/cutting width*2		Max. 1,346 mm (53 in.)		Max. 736 mm (29 in.)	
Ink	Type	TrueVIS Element Ink			
	Colours	Four colours (cyan, magenta, yellow, black)			
Printing resolution (dots per inch)		Max. 900 dpi			
Cutting speed		10 to 300 mm/s (0.4 to 11.8 in/s)			
Blade force*3		30 to 500 gf			
Blade	Type	Roland CAMM-1 series blade			
	Blade offset	0.000 to 1,500 mm (0.0 to 59.1 mil)			
Software resolution (when cutting)		0.025 mm/step (0.98 mil/step)			
Distance accuracy (when printing)**5		Error of less than ±0.3 % of distance travelled or ±0.3 mm (±11.8 mil), whichever is greater			
Distance accuracy (when cutting)**4		Error of less than ±0.4 % of distance travelled or ±0.3 mm (±11.8 mil), whichever is greater When distance correction has been performed (when the setting for [CUTTING MENU] - [CALIBRATION] has been made): Error of less than ±0.2 % of distance travelled or ±0.1 mm (±3.9 mil), whichever is greater			
Repeatability (when cutting)**6		±0.1 mm (±3.9 mil) or less			
Alignment accuracy for printing and cutting**7		±0.5 mm (±19.7 mil) or less			
Alignment accuracy for printing and cutting when reloading media**8		Error of less than ±0.5 % of distance travelled by media or ±3 mm (±0.2 in.), whichever is greater			
Media heating system*9		Print heater set temperature: 30 to 45°C (86 to 113°F) Dryer set temperature: 30 to 50°C (86 to 122°F)			
Connectivity		Ethernet (100BASE-TX/1000BASE-T, automatic switching)			
Power-saving function		Automatic sleep feature			
Power requirements		AC 100 to 120 V ±10 %, 8.0 A, 50/60 Hz or AC 220 to 240 V ±10 %, 4.0 A, 50/60 Hz		AC 100 to 120 V ±10%, 5.4 A, 50/60 Hz or AC 220 to 240 V ±10%, 2.7 A, 50/60 Hz	
Power consumption	During operation	Approx. 1,050 W		Approx. 710 W	
	Sleep mode	Approx. 20 W			
Acoustic noise level	During operation	65 dB (A) or less			
	During standby	48 dB (A) or less			
Dimensions (with stand)		2,685 (W) x 745 (D) x 1,310 (H) mm (105.7 [W] x 29.3 [D] x 51.6 [H] in.)		2,070 (W) x 745 (D) x 1,310 (H) mm (81.5 [W] x 29.3 [D] x 51.6 [H] in.)	
Weight (with stand)		178 kg (392 lb.)		147 kg (324 lb.)	
Environment	Power on	Temperature: 20 to 32°C (68 to 90°F), humidity: 35 to 80 % RH (no condensation)			
	Power off	Temperature: 5 to 40°C (41 to 104°F), humidity: 20 to 80 % RH (no condensation)			
Included items		VersaWorks Dual RIP Software, exclusive stands, power cable, media clamps, media holders, replacement blade for separating knife, User's Manual etc.			

Print speeds				Model	
Media	Print mode	Resolution	Pass	SG-540	SG-300
Generic Vinyl	High Speed	600 x 600 dpi	7p	9.4 m/h	7.5 m/h
	Standard	900 x 600 dpi	10p	7.9 m/h	6.0 m/h
	High Quality	900 x 900 dpi	14p	5.5 m/h	4.2 m/h

Roland VersaWorks Dual System Requirements	
Operating system	Windows® 10 (32/64-bit) Windows® 8.1 (32/64-bit) Windows® 7 Professional / Ultimate (32/64-bit)
CPU	Intel® Core™2 Duo, 2.0 GHz or faster recommended
RAM	2 GB or more recommended
Video card and monitor	A resolution of 1,280 x 1,024 or more recommended
Free hard-disk space	40 GB or more recommended
Hard-disk file system	NTFS format
Optical drive	DVD-ROM drive

\*Roland VersaWorks Dual is a 32-bit application, which runs on 64-bit Windows® with WoW64 (Windows 32-bit on Windows 64-bit).

Options		
TrueVIS Element Ink*	TE-CY	Cyan, 500 cc
	TE-MG	Magenta, 500 cc
	TE-YE	Yellow, 500 cc
	TE-BK	Black, 500 cc
Cleaning liquid	TR-CL	Cleaning liquid, 500 cc
Blades	ZEC-U5032	For sign vinyl in general, 2pcs.
	ZEC-U5025	For thick, reflective and fluorescent vinyl, as well as sign vinyl in general, 5pcs.
Blade holders	XD-CH2	Blade holder with blade extension adjuster, made of aluminium
	XD-CH3	Blade holder with blade extension adjuster, made of resin

\*TrueVIS Element Ink can only be used in regions authorised by Roland DG Corporation.

Options	
Automated take-up system	
	<b>TU2-54</b> [For SG-540]
	<b>TU2-30</b> [For SG-300]
* Rolls up to 30 kg (66 lbs.)	

\*1 The media holders of this machine are designed to be used exclusively with media that has a paper tube (core) with an inner diameter of 3 inches. To use 2-inch media, the optional media flanges are required. \*2 The length of printing or cutting is subject to the limitations of the program. \*3 • 500 gf is the maximum instantaneous blade force. • The blade force must be adjusted according to details such as the media thickness. \*4 • Media type: Media specified by Roland DG Corporation. • Temperature: 25°C (77°F), humidity: 50 % • Roll media must be loaded correctly. • Applicable when all pinch rollers that can be used with the media width are used. • Side margins: 25 mm (1.0 in.) or more for both the left and right margins • Front margin: 35 mm (1.4 in.) or more • Excluding expansion/contraction of the media • Not guaranteed when the print heater or dryer is used. • Assumes all correction and adjustment functions of the machine have been used properly. \*5 • Print travel: 1 m (39.4 in.) \*6 • [PREFEED] menu item must be set to "ENABLE." Range for assured repetition accuracy [54-inch model] • For media with a width exceeding 610 mm (24.0 in.): Length 4,000 mm (157.5 in.) • For media with a width of 610 mm (24.0 in.) or less: Length 8,000 mm (315.0 in.) [30-inch model] Length 4,000 mm (118.2 in.) \*7 • Provided that the media feed length is 3,000 mm (118.1 in.) or less • Excludes the effects of slanted movement and of expansion and contraction of the media \*8 • Data size: [54-inch model] 1,000 mm (39.4 in.) in the media-feed direction, 1,346 mm (53.0 in.) in the carriage-movement direction [30-inch model] 1,000 mm (39.4 in.) in the media-feed direction, 736 mm (29 in.) in the carriage-movement direction • No lamination • Automatic detection of crop marks at 4 points when media is reloaded • During cutting, [PREFEED] menu item must be set to "ENABLE." • Excluding possible shift caused by expansion/contraction of the media and/or by reloading the media. \*9 • Warm-up is required after the power is turned on. This may require 5 to 20 minutes, depending on the operating environment. • Depending on the ambient temperature and the media width, the set temperature may not be reached.

Apsom Infotex	
	As Roland DG's Master Distributor for India, Apsom Infotex Ltd provides exemplary service, expert knowledge & an established distribution & service infrastructure.
Better, to grow with	

Roland DG reserves the right to make changes in specifications, materials or accessories without notice. Your actual output may vary. For optimum output quality, periodic maintenance to critical components may be required. Please contact your Roland DG dealer for details. No guarantee or warranty is implied other than expressly stated. Roland DG shall not be liable for any incidental or consequential damages, whether foreseeable or not, caused by defects in such products. PANTONE® is the property of Pantone LLC. All other trademarks are the property of their respective owners. Reproduction or use of copyrighted material is governed by local, national, and international laws. Customers are responsible for observing all applicable laws and are liable for any infringement. Roland DG Corporation has licensed the MMP technology from the TPL Group.



Promoted and Supported by: **APSOM Infotex Ltd.**

CIN-U74899DL1993PLC054306

For more information please contact: Ph.: +91-120-4897950, email: sales@apsom.com | www.apsom.com

Product names, logos, brands, photographs and other trademarks are property of their respective trademark holders.

144, 1<sup>st</sup> Floor, Laxmi Plaza, Laxmi Indl. Estate, New Link Road, Andheri (W), Mumbai - 400053. Tel.: 022-42460802/07/08

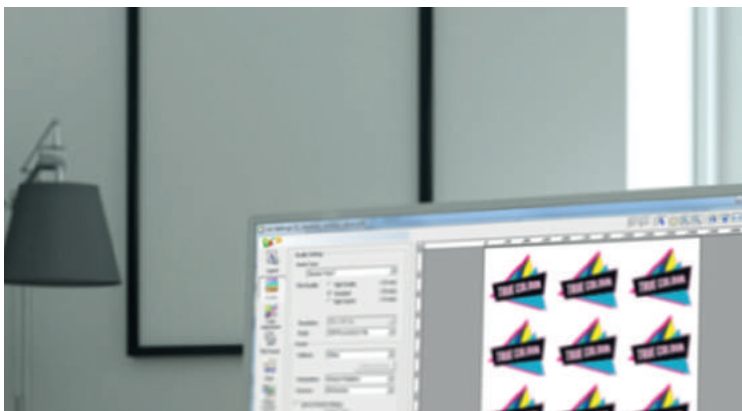
North - Delhi 09350205230, Chandigarh 09810047561/9815689933, Lucknow 09818800517/9935142972, Jaipur 09414024665, Patna 09304735004/9334506323, Dehradun 09810047561, South - Bengaluru 777/V 13<sup>th</sup> Main 2<sup>nd</sup> Cross Hal II Stage, 100 ft road, Indira Nagar, Tel.: 080-42042390/09446192909, Chennai 09382170774, Hyderabad 09394516042, Kochi 09061830008, East - Bhubneshwar EB-28, Stage V, BDA Colony, Laxmi Sagar, Tel.: +91-674-2577081, Phone: 09337292027, Kolkata 57/1, N.S.C. Bose Road, Tel.: 033-40074807/09339149011, Guwahati 09339149011/ 9435106913, Ranchi 07050486270, Raipur 08668221668, West - Mumbai 144, 1<sup>st</sup> Floor, Laxmi Plaza, Laxmi Indl. Estate, New Link Road, Andheri (W), Mumbai - 400053. Tel.: 022-42460802/07/08, Ahmedabad 09824077124/9824092323, Pune 09705123405



**SG-540**  
(1,371 mm wide)



**SG-300**  
(762 mm wide)



## EASE OF USE



### Helpful technology for user-friendly operation

Quick to set up and intuitive to operate, you can start making money from day one. The SG comes with smart new features that make it even easier and faster to deliver your output.

With the Roland DG Mobile Panel you can operate your SG remotely, to manage production, cleaning functions and queue test prints directly from your smartphone or tablet.\*

Powerful VersaWorks Dual RIP software, included with the SG, utilises PDF and PostScript engines to process complex files with transparencies, layers and other special effects. VersaWorks Dual also includes useful features such as nesting, tiling, variable data printing, step and repeat, predictive ink calculator and more as standard.



## PRODUCTIVITY

**Up to 60% faster\*\***

FlexFire printheads deliver more print per pass with exceptional quality. Integrated print and cut technology means that you can automatically print, reposition and cut graphics, all on the same device, removing the need for manual intervention. The SG's brilliant 'clean hands' ink system uses 500ml ink pouches which fit neatly and quickly into reusable holders for no mess and less waste.



## VALUE

### A sound investment which starts paying for itself, fast

With an impressive price/performance ratio, the SG minimises the time it takes to pay back your investment. With integrated print and cut there is no need to invest in additional space and no specialist electrical connections or adaptations are necessary. Plus, Roland DG devices have always been known to hold their value over time and the excellent build quality means you can rely on your SG now and in the years to come.